



FAST RESPONSE DIESEL LEAK DETECTION SYSTEM TO PROTECT CRITICAL 24/7 OPERATIONS

Project	Major global sports network broadcasting facility
Location	Connecticut, USA
Requirement	Fast and reliable remote fuel leak monitoring system
Results	PermAlert designed and implemented leak detection system for entire fuel system
Completion Date	2017

OVERVIEW

Customer's broadcasting facility operates 24/7 to support its programming for global sports fans. Needing to ensure the entire facility has adequate backup power, the customer built a state-of-the-art diesel generator plant room on its' campus. To ensure proper fire & facility loss prevention and compliance to EPA standards, the customer reached out to PermAlert to implement a fuel leak detection system.

CUSTOMER REQUIREMENTS

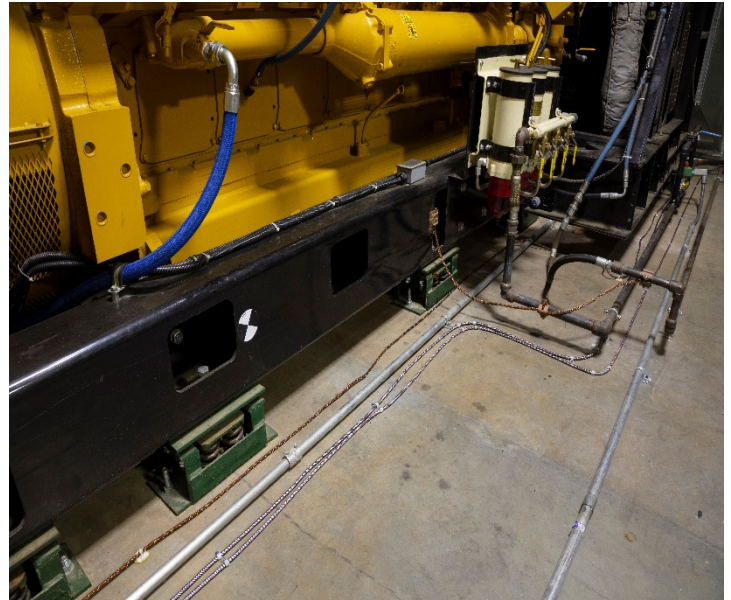
The customer's generator plant is located in a remote facility away from the main building, and they needed a fuel leak detection system that could be integrated and remotely monitored by the existing BMS (building management system). In addition, given the high amount of fuel stored at the facility, the customer also required a quick-responding leak detection system with the ability to detect leaks early.

THE SOLUTION

To meet the requirements, PermAlert installed the PAL-AT with AGW-Gold sensing cable for the entire generator fuel system to monitor the generator, day tanks and UST (underground storage tank).

AGW-Gold Sensing Cable

PermAlert installed the AGW-Gold cable on the floor around the perimeter of the generator and day tanks. AGW-Gold is a fast reaction, quick dry and chemically resistant sensing cable. This is the only sensing cable in the industry that meets the FM7745 standard of 30 seconds or less response time, making it the ideal solution for this application, whereas the industry's standard cable typically needs a significantly longer time (at least 30 minutes) to detect diesel.



PAL-AT Control Panel

The PAL-AT control panel was installed in the generator room and due to the panel's versatility, it allowed for an easy integration with the customer's BMS system. The panel provided incredible flexibility to extend and monitor multiple generators, as well as ancillary equipment by simply adding jumper cable in between the sensing cable. This ultimately led to a more optimized and cost effective solution requiring less control panels.

PermAlert Leak Detection Intelligent - Accurate - Reliable



The information contained in this document is subject to change without notice. PermAlert, a Division of PERMA-PIPE, Inc., believes the information contained herein to be reliable, but makes no representation as to accuracy or completeness. PermAlert offers a sole and exclusive warranty as is stated in the Standard Terms and Conditions of Sale for these products. In no event will PermAlert be liable for any indirect, incidental or consequential damages.

PermAlert

Address: 6410 W. Howard St., Niles IL 60714-3302
Tel. No.: (847)966-2190
Fax No.: (847)470-1204
www.permalert.com